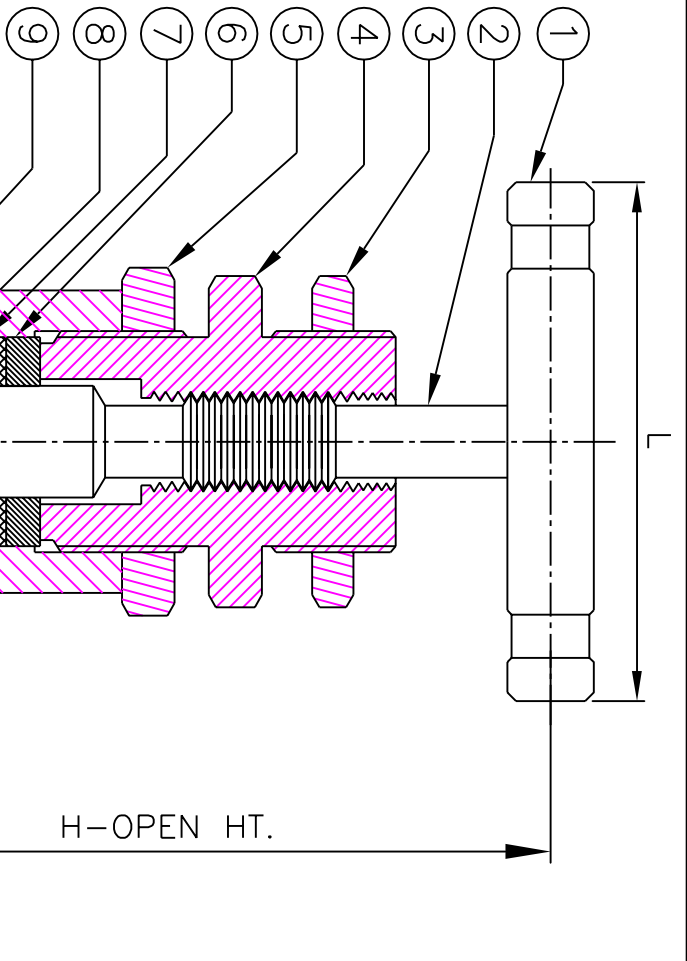


IF IN DOUBT, PLEASE ASK

PARTS LIST

S.NO.	PART NAME	QTY.	MATERIAL
1	HANDLE	1	AISI304 . ALU.COATED
2	STEM	1	S.S.316 STELLITED V TIP
3	PANEL NUT	1	AISI316 /A276
4	BONNET	1	
5	LOCKNUT	1	
6	GLAND	1	
7	GLAND PACKING	1	PTFE/GRAPHOIL
8	GLAND WASHER	1	AISI316
9	BODY	1	ASTM A182/F316



FEATURES:

316 SS CONSTRUCTION FOR CORROSION RESISTANCE.
 EXCELLENT FLOW REGULATION & LEAK TIGHT.
 ONE PIECE BODY CONSTRUCTION. NO WELDING USED.
 PACKING BELOW STEM THREADS ISOLATE THREADS FROM SYSTEM FLUIDS.
 BACK SEATING ARRANGEMENT.

TESTING:

STANDARD TEST:- EACH VALVES IS TESTED WITH NITROGEN AT 1000 PSI FOR SEAT & PACKING LEAKAGE, WITH A MAX. ALLOWABLE LEAK RATE OF 0.1 SEC. / MIN.
 HYDRO TEST:- PERFORMED WITH PURE WATER AT 1-1/2 TIMES OF THE WORKING PRESSURE.

LUBRICATION:

MOLLY ANTI-SEIZE LUBRICANT.

NOTES:-

OPTIONAL GRAPHOIL PACKING AVAILABLE FOR HIGH TEMPERATURE APPLICATION . SERIES OF END CONNECTIONS LIKE MALE/FEMALE NPT, BSP PIPE THREADED ENDS WITH STRAIGHT PATTERN. PANEL NUT STD.
 VALVE CAN BE SUPPLIED TO MEET CURRENT REVISION OF NACE MR-01-75.(SOURGAS SERVICE) DIMENSIONS ARE FOR REFERENCE ONLY. SUBJECT TO CHANGE.

TECHNICAL DATA

Pr. Rot.	Temp. Rot.	Cv	ORIFICE	P-THREADS NPT/BSPT/BSPTF	A	D-DIA	H OPEN HT.	L
6000 PSI (41300 kpa)	PTFE -20 to 250° F (-29° to 121°C)	0.65	5 mm.	1/4"	45	20	80	50
	GRAFOIL -20 to 600° F (-29° to 315°C)	0.80	6.5mm.	3/8"	63	31	110	60
		1.90	9.5mm.	1"	82	43.5	150	70

TABLE OF DIMENSION

NOTE:-

"PB"SERIES NEEDLE VALVE- PBT - F X F

DRN.	MT	SCALE	N.T.S.
CHD.	ET	DATE	07-08-2002
APPD.	JP	DRG. NO.	PNV-PB-PF-PBT

PANAM ENGINEERS
 AN ISO 9001 : 2000 COMPANY
 MUMBAI - INDIA